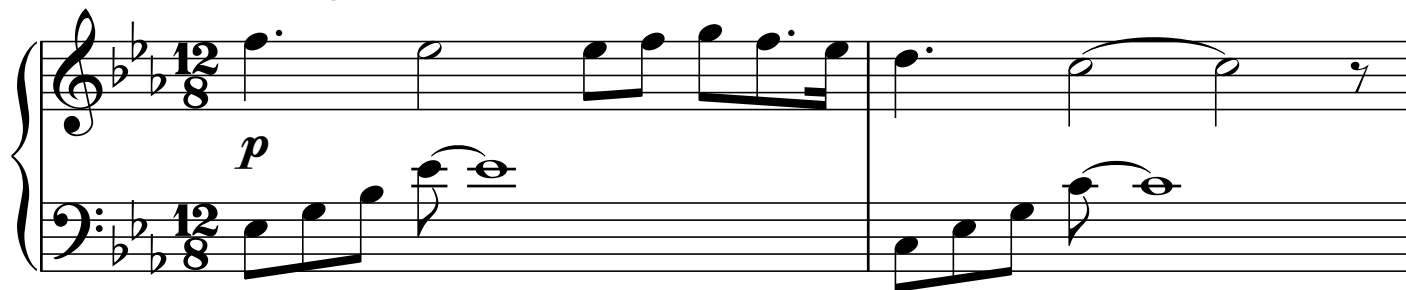


Love Will Never End

Adagio ♩ = 80

Victor M. Barba



2

9

11

11

Example 11 continues with measures 11 and 12. Measure 11 features a treble clef with a key signature of two flats (B-flat and E-flat). The right hand plays a series of eighth notes: B-flat4, A4, G4, F4, E-flat4, D4, C4, B-flat3, A3, G3, F3, E-flat3, D3, C3, B-flat2, A2, G2, F2, E-flat2, D2, C2, B-flat1, A1, G1, F1, E-flat1, D1, C1, B-flat0, A0, G0, F0, E-flat0, D0, C0, B-flat-1, A-1, G-1, F-1, E-flat-2, D-2, C-2, B-flat-3, A-3, G-3, F-3, E-flat-4, D-4, C-4, B-flat-5, A-5, G-5, F-5, E-flat-6, D-6, C-6, B-flat-7, A-7, G-7, F-7, E-flat-8, D-8, C-8, B-flat-9, A-9, G-9, F-9, E-flat-10, D-10, C-10, B-flat-11, A-11, G-11, F-11, E-flat-12, D-12, C-12, B-flat-13, A-13, G-13, F-13, E-flat-14, D-14, C-14, B-flat-15, A-15, G-15, F-15, E-flat-16, D-16, C-16, B-flat-17, A-17, G-17, F-17, E-flat-18, D-18, C-18, B-flat-19, A-19, G-19, F-19, E-flat-20, D-20, C-20, B-flat-21, A-21, G-21, F-21, E-flat-22, D-22, C-22, B-flat-23, A-23, G-23, F-23, E-flat-24, D-24, C-24, B-flat-25, A-25, G-25, F-25, E-flat-26, D-26, C-26, B-flat-27, A-27, G-27, F-27, E-flat-28, D-28, C-28, B-flat-29, A-29, G-29, F-29, E-flat-30, D-30, C-30, B-flat-31, A-31, G-31, F-31, E-flat-32, D-32, C-32, B-flat-33, A-33, G-33, F-33, E-flat-34, D-34, C-34, B-flat-35, A-35, G-35, F-35, E-flat-36, D-36, C-36, B-flat-37, A-37, G-37, F-37, E-flat-38, D-38, C-38, B-flat-39, A-39, G-39, F-39, E-flat-40, D-40, C-40, B-flat-41, A-41, G-41, F-41, E-flat-42, D-42, C-42, B-flat-43, A-43, G-43, F-43, E-flat-44, D-44, C-44, B-flat-45, A-45, G-45, F-45, E-flat-46, D-46, C-46, B-flat-47, A-47, G-47, F-47, E-flat-48, D-48, C-48, B-flat-49, A-49, G-49, F-49, E-flat-50, D-50, C-50, B-flat-51, A-51, G-51, F-51, E-flat-52, D-52, C-52, B-flat-53, A-53, G-53, F-53, E-flat-54, D-54, C-54, B-flat-55, A-55, G-55, F-55, E-flat-56, D-56, C-56, B-flat-57, A-57, G-57, F-57, E-flat-58, D-58, C-58, B-flat-59, A-59, G-59, F-59, E-flat-60, D-60, C-60, B-flat-61, A-61, G-61, F-61, E-flat-62, D-62, C-62, B-flat-63, A-63, G-63, F-63, E-flat-64, D-64, C-64, B-flat-65, A-65, G-65, F-65, E-flat-66, D-66, C-66, B-flat-67, A-67, G-67, F-67, E-flat-68, D-68, C-68, B-flat-69, A-69, G-69, F-69, E-flat-70, D-70, C-70, B-flat-71, A-71, G-71, F-71, E-flat-72, D-72, C-72, B-flat-73, A-73, G-73, F-73, E-flat-74, D-74, C-74, B-flat-75, A-75, G-75, F-75, E-flat-76, D-76, C-76, B-flat-77, A-77, G-77, F-77, E-flat-78, D-78, C-78, B-flat-79, A-79, G-79, F-79, E-flat-80, D-80, C-80, B-flat-81, A-81, G-81, F-81, E-flat-82, D-82, C-82, B-flat-83, A-83, G-83, F-83, E-flat-84, D-84, C-84, B-flat-85, A-85, G-85, F-85, E-flat-86, D-86, C-86, B-flat-87, A-87, G-87, F-87, E-flat-88, D-88, C-88, B-flat-89, A-89, G-89, F-89, E-flat-90, D-90, C-90, B-flat-91, A-91, G-91, F-91, E-flat-92, D-92, C-92, B-flat-93, A-93, G-93, F-93, E-flat-94, D-94, C-94, B-flat-95, A-95, G-95, F-95, E-flat-96, D-96, C-96, B-flat-97, A-97, G-97, F-97, E-flat-98, D-98, C-98, B-flat-99, A-99, G-99, F-99, E-flat-100, D-100, C-100, B-flat-101, A-101, G-101, F-101, E-flat-102, D-102, C-102, B-flat-103, A-103, G-103, F-103, E-flat-104, D-104, C-104, B-flat-105, A-105, G-105, F-105, E-flat-106, D-106, C-106, B-flat-107, A-107, G-107, F-107, E-flat-108, D-108, C-108, B-flat-109, A-109, G-109, F-109, E-flat-110, D-110, C-110, B-flat-111, A-111, G-111, F-111, E-flat-112, D-112, C-112, B-flat-113, A-113, G-113, F-113, E-flat-114, D-114, C-114, B-flat-115, A-115, G-115, F-115, E-flat-116, D-116, C-116, B-flat-117, A-117, G-117, F-117, E-flat-118, D-118, C-118, B-flat-119, A-119, G-119, F-119, E-flat-120, D-120, C-120, B-flat-121, A-121, G-121, F-121, E-flat-122, D-122, C-122, B-flat-123, A-123, G-123, F-123, E-flat-124, D-124, C-124, B-flat-125, A-125, G-125, F-125, E-flat-126, D-126, C-126, B-flat-127, A-127, G-127, F-127, E-flat-128, D-128, C-128, B-flat-129, A-129, G-129, F-129, E-flat-130, D-130, C-130, B-flat-131, A-131, G-131, F-131, E-flat-132, D-132, C-132, B-flat-133, A-133, G-133, F-133, E-flat-134, D-134, C-134, B-flat-135, A-135, G-135, F-135, E-flat-136, D-136, C-136, B-flat-137, A-137, G-137, F-137, E-flat-138, D-138, C-138, B-flat-139, A-139, G-139, F-139, E-flat-140, D-140, C-140, B-flat-141, A-141, G-141, F-141, E-flat-142, D-142, C-142, B-flat-143, A-143, G-143, F-143, E-flat-144, D-144, C-144, B-flat-145, A-145, G-145, F-145, E-flat-146, D-146, C-146, B-flat-147, A-147, G-147, F-147, E-flat-148, D-148, C-148, B-flat-149, A-149, G-149, F-149, E-flat-150, D-150, C-150, B-flat-151, A-151, G-151, F-151, E-flat-152, D-152, C-152, B-flat-153, A-153, G-153, F-153, E-flat-154, D-154, C-154, B-flat-155, A-155, G-155, F-155, E-flat-156, D-156, C-156, B-flat-157, A-157, G-157, F-157, E-flat-158, D-158, C-158, B-flat-159, A-159, G-159, F-159, E-flat-160, D-160, C-160, B-flat-161, A-161, G-161, F-161, E-flat-162, D-162, C-162, B-flat-163, A-163, G-163, F-163, E-flat-164, D-164, C-164, B-flat-165, A-165, G-165, F-165, E-flat-166, D-166, C-166, B-flat-167, A-167, G-167, F-167, E-flat-168, D-168, C-168, B-flat-169, A-169, G-169, F-169, E-flat-170, D-170, C-170, B-flat-171, A-171, G-171, F-171, E-flat-172, D-172, C-172, B-flat-173, A-173, G-173, F-173, E-flat-174, D-174, C-174, B-flat-175, A-175, G-175, F-175, E-flat-176, D-176, C-176, B-flat-177, A-177, G-177, F-177, E-flat-178, D-178, C-178, B-flat-179, A-179, G-179, F-179, E-flat-180, D-180, C-180, B-flat-181, A-181, G-181, F-181, E-flat-182, D-182, C-182, B-flat-183, A-183, G-183, F-183, E-flat-184, D-184, C-184, B-flat-185, A-185, G-185, F-185, E-flat-186, D-186, C-186, B-flat-187, A-187, G-187, F-187, E-flat-188, D-188, C-188, B-flat-189, A-189, G-189, F-189, E-flat-190, D-190, C-190, B-flat-191, A-191, G-191, F-191, E-flat-192, D-192, C-192, B-flat-193, A-193, G-193, F-193, E-flat-194, D-194, C-194, B-flat-195, A-195,

13

13

2 2

15

15

rit.

17